



**Lakeland**<sup>®</sup>



# PROTECTIVE GEAR FOR FIRST RESPONDERS

STEALTH B2 B1 B10 PROXIMITY MATERIALS WILDLAND DUAL CERT GEAR OPTIONS/SIZING



**B2 Coat and Pants shown**



**COMPETITION-PROVEN PERFORMANCE**

The 3M Scott Firefighter Combat Challenge is commonly referred to as the “toughest 2 minutes in sports”. It’s the ultimate test of “Fit and Functionality” for turnout gear. Combat Challenge is also the proving grounds where Lakeland perfects current and future turnout gear technology.

New innovations don’t just show up in highly customized race gear; features like Easy Grip™ DRD’s and dynamic pleating makes it’s way into all levels of Lakeland turnout gear. Check it out!



**7” Black Kevlar® Thumbhole Wristers**

100% Black Kevlar® Thumbhole Wristers combine with the black Stedprene® sleeve wells and black Stedshield® cuff reinforcements to provide comfort and thermal protection to the sleeve/glove interface area.



**Easy Grip™ DRD Device**

Our unique Easy Grip™ DRD is directly connected to the strap which cuts access time in half - even with a gloved hand. It’s as easy as 1, 2, 3! Simply peel up the EasyGrip, pull straight out, slip your hand through the rescue loop and pull to safety.



**Dynamic Pleated Back, Shoulders and Arms**

Our Ergonomically Shaped Sleeves with built-in Expansion Gussets work together with our “On the Shoulder” arm seam and pleated back to provide unparalleled reach and mobility without any sleeve retraction or coat rise. (Stealth and B2 models only)



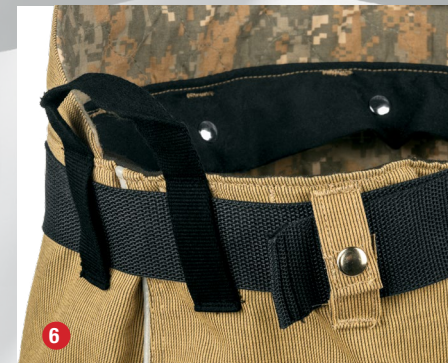
**Napoleon Side Pocket**

Napoleon pocket under storm flap provides a dry, sterile, secure area for personal belongings. (Stealth models only)



**SideKik™ Knee Pads with Dynamic Pleats**

Our SideKik™ Knee Reinforcements cover a wider area and feature a “bump-out” to the outside of the leg for that extra protection when using the side of your knees to push off or feel your way through a dark environment.



**Belt Loop Handle Grips**

We turned a couple of belt loops into handle grips to assist when donning our turnout pant. Sometimes it’s the little things make a big difference— once you try it you’ll wonder why nobody else thought of this sooner!



**Black Ops™ Suspenders**

No more suspender buttons! Lakeland’s exclusive Black-Ops™ Suspenders are ergonomic in design with maximum flexibility for fit. They can be adjusted along the waistband to accommodate any torso. The unique design prevents the suspenders from slipping off the shoulders. For added comfort, a horizontal strap connects the two front straps, further securing them in place.



# LAZERMAX™

Get the utmost in visibility, day or night, with LazerMax™ Trim Reflective Piping!  
LazerMax™ is standard equipment on all Stealth™ and B2™ Turnout Gear!

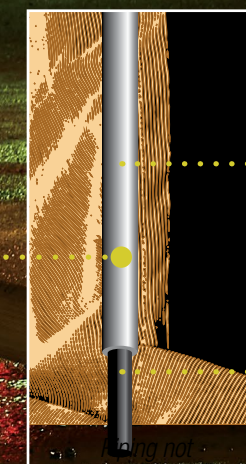
## What Is LazerMax?

LazerMax™ is a Lakeland proprietary patented feature that significantly increases the visibility of first responders in low light conditions. We create piping made from 3M® Silver Scotchlite™ material, and wrap it around Kevlar® cording. This piping is then sewn into the seams of our garments. In low light conditions, when LazerMax™ Trim is hit by light, it almost looks like it's "plugged in".

It really pops!

LazerMax™ is just another reason why choosing Lakeland PPE for first responders is one of the best choices you can make.

LazerMax™ Trim Reflective Piping.  
Exclusively from Lakeland.



Outer  
3M Scotchlite™  
Reflective  
Material

Inner Kevlar®  
cording





## STEALTH COAT WITH LAZERMAX™

You're not afraid of pushing the limits when battling fires. It's what you do. We've pushed the limits too in ergonomic design, features and aesthetics in a premium garment.

The Stealth™ is light years ahead of the competition and has been proven on the fire grounds and on the Combat Challenge courses. Lightweight and maneuverable like its namesake, the Stealth™ comes loaded with all the standard features you need and then some. Stand out with Stealth™!

### Solid Colour or Two-Tone Stealth™ available!

The Stealth can be ordered through our SCX Semi-Custom Program and will come with all the standard features shown. Stealth is available in a wide variety of materials, colours and options.

#### Two-tone Stealth has:

- Black Bottom Sleeve Panel in same base material as coat body.
- Black Lower Leg Panel in same base material as pant body.
- Colours separated by LazerMax™ Trim
- Includes all Standard features shown

Compliant to the current 2018 Edition of NFPA 1971 Standard on Protective Ensembles for Structural Firefighting



Two-tone PBI Model shown

Style ST32



Kevlar. Nomex.

Set in sleeves distribute the weight of the coat evenly over the shoulders, while contour cut gives greater freedom of movement.

Internal Draw-cord back reduces bulk in the front of the coat when donning an SCBA.

Long, beveled back provides additional overlap for protection. Add letters for identification too!



## Stealth™ Coat Standard Features



Low profile 3" Collar and scooped profile Throat Tab protect without interfering with any SCBA.



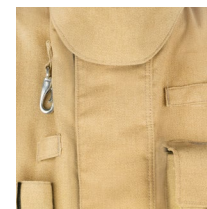
Contour-cut Sleeve ergonomically curved so it bends like the human anatomy, giving greater freedom of movement.



Shoulder Pleats give maximum mobility. Set-in sleeve distributes the weight of the coat evenly over the shoulders.



An extra layer of thermal liner in the shoulders protects from heat buildup in areas of high compression.



3.25" Storm Flap provides plenty of thermal protection. Closure secures with FR Velcro®.



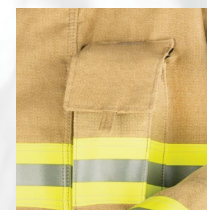
Napoleon Pocket under Storm Flap provides a dry, sterile, secure area for personal belongings.



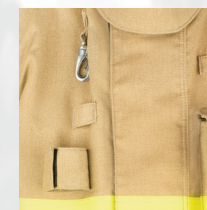
Cuffs feature Black Stedshield reinforcement with a 5" deep sleeve well, great for interfacing with wristlet or gauntlet gloves.



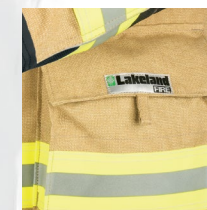
7" Black Kevlar® wristers with thumb hole attached to Black Stedprene sleeve wells.



Radio Pocket with mic strap with pocket pull tab loop for attachments. Velcro® antenna openings on both sides of antenna flap.



Universal Flashlight Holder with snap hook, center strap and bottom Velcro® strap fits any flashlight.



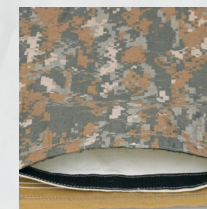
Large 2" x 8" x 8" Expansion Pocket lined with Kevlar® Twill for additional tools. Hand-warmer pocket slots behind expansion pocket.



Draw-cord back allows for reducing of excess material in rear of coat. SCBA's fit better and coat material does not bunch up in front.



Stealth Coat features a long, beveled back providing additional overlap for protection. Add letters for identification too!



Easy access Velcro® Liner Inspection Port in hem of garment for ease of liner inspection.



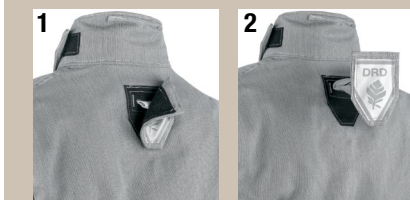
Pocket Pull-tabs make for easy access with gloves on.

## Feature List

- Beveled Hem, 29" Front, 35" Back, graded to size.
- Plastic Delrin® YKK® Zipper/Velcro® Closure
- NYC Style Lime/Yellow 3M™ Scotchlite™ Reflective Material for enhanced visibility - Double Stitched
- Ergonomic Pleated Back/Shoulders
- Easy Grip™ DRD
- Internal Outer Shell Draw Cord to reduce bulk
- Napoleon Pocket under Storm Flap
- Low Profile 3" Collar with Hanger Loop
- Set-In Pleated Ergonomically Curved Sleeves
- 7" Black Kevlar® Thumbhole Wristers
- 5" Deep Black Stedprene Sleeve Wells
- Black Stedshield Coat Cuff Reinforcements – Double Stitched
- 2" x 3.5" x 8" Radio Pocket with Velcro® Antenna Opening on each side of Flap
- Self Mic Strap above Radio Pocket
- Universal Flashlight Holder
- 2" x 8" x 8" Coat Expansion Pockets with Handwarmer and Pull-Tabs on Flap
- Liner Inspection Velcro® Opening
- LazerMax™ Trim

## EasyGrip™ DRD

It's as easy as 1, 2, 3!



### Exclusive to Lakeland Gear!

Lakeland recognizes that in extreme emergency situations, speed is essential. So utilizing our exclusive EasyGrip™ DRD system is fast.

1. Peel up the Velcro® attached EasyGrip™
2. Pull straight up and out
3. Slip your gloved hand through the rescue loop and pull. It's that simple. And quick.

# STEALTH PANTS WITH LAZERMAX™

Stealth pants include cutting-edge design elements that focus on comfort, functionality and ergonomics. Exactly what you would expect in a premium set of gear. Continuing the design style of the coat, Stealth pants are beveled cut with a lowered front and a slightly raised back. Loaded with features, these ergonomic pants make fatigue a thing of the past.

## Solid Colour or Two-Tone Stealth™ available!

The Stealth can be ordered through our SCX Semi-Custom Program and will come with all the standard features shown. Stealth is available in a wide variety of materials, colours and options.

### Two-tone Stealth has:

- Black Bottom Sleeve Panel in same base material as coat body.
- Black Lower Leg Panel in same base material as pant body.
- Colours separated by LazerMax™ Trim
- Includes all Standard features shown



Style ST33

Compliant to the current 2018 Edition of NFPA 1971 Standard on Protective Ensembles for Structural Firefighting



## Stealth™ Pant Standard Features



2" Independent Waistband. Pant liner attaches to pants under a hidden flap - no snagging as you don and doff!



Multiple Belt Loops keep belt in place. Handy handle grips make donning pants a breeze.



2" Kevlar® Belt System gives maximum wear and tear.



Two front Belt Loops open with snaps and Velcro® enable use of Class 1 RIT ladder belt.



2" x 10" x 10" Expansion Pockets with pull tabs for easy opening. Pockets lined with Kevlar® Twill for durability.



FR Velcro® Closure on square cut fly.



One-piece lower leg gives a better fit and increased mobility while eliminating side seam abrasion.



Dynamic Pleats above the knees moves in and out as your legs bend, giving greater mobility and less fatigue.



SideKick™ Knee Pad extends the knee panel to the outside of the leg. SideKick™ reduces abrasion when pushing with the side of the knee.



Optional Foam Knee Padding makes sustained crawling more comfortable. Order option PO-FMKPST.



## Stealth Internal Harness (IH) Pants

Stealth pants available as an IH Internal Harness Pant using the RIT Class II Kevlar Harness. Also available is the Class 1 RIT Rescue Belt which easily fits into the existing standard Belt loops.

IH Pant option: IH33  
Harness option: PO-RITC2

## Feature List

- Beveled Waist Design – Low front with slight rise towards rear
- Pant Closure: 2" Wide Black Kevlar® Belt with Belt Loop/Handle Grips, Snap and Velcro® Fly Closure
- Single Lower Leg Panel with center rear seam – no side seams exposed to abrasion
- 2" x 10" x 10" Pant Expansion Pocket with pocket pull-tabs, lined with Kevlar® Twill
- Black Stedshield Double Padded Knees with Side Kick Extension Panel
- Black Stedshield Pant Cuff Reinforcements – Double Stitched
- Lime/Yellow 3M™ Scotchlite™ Reflective Material for enhanced visibility – Double Stitched
- Reverse Boot Cut
- Black-Ops Multi Adjust Suspenders – No Metal Suspender Buttons!
- LazerMax™ Trim

## Lakeland RIT Belt Option

As an optional feature, Lakeland can equip your pants with the Optional Class 1 RIT Rescue Belt. This belt interfaces with the standard front snap loops, making escape from a hazardous environment easy. Unsnapping the front two belt loops enables the D-ring on the RIT belt to move up to the chest area, stabilizing the wearer as you egress from the hazard.

### RIT Belt option PO-RITRB



Front belt loops are unsnapped, with belt in raised configuration.



Pant front belt loops are snapped closed, showing belt in standard configuration.

## Our Black-Ops™ Suspenders... A Whole New Approach To Keeping Your Pants in Place!

Slipping suspenders are no laughing matter. Our radically designed approach keeps the suspenders up too! Our goal was two-fold; eliminate as much metal as possible, including snaps, and to create a new ergonomically shaped system that would eliminate suspenders slipping off the shoulders, and be comfortable at the same time. The result? Black-Ops™. Try them on for size... they are so comfortable you'll forget you are wearing suspenders!



## Black-Ops™ Multi-Adjustment System

- Independent yoke system that curves around neck and front for better fit
- Adjustable center sternum strap keeps the suspenders in position
- Vertical tabs for stowing mic or accessories
- Suspenders attach to pants with snap-tabs and segregated MOLLE style loops
- Rip-cord style pulls easily adjust length and fit



## B2™ COAT WITH LAZERMAX™

B2™ is our workhorse. Nose down and grind it out. Utilitarian in every aspect and more... You don't have to spec out needed options – they're already there!

This power house is ready for battle with all the great Lakeland features you need to get the job done. The B2™ is available custom built, or keep it simple and order our OSX B2™ right off the shelf in our standard material configuration.

Compliant to the current 2018 Edition of NFPA 1971 Standard on Protective Ensembles for Structural Firefighting



Style OSX BP3207G



Pleated shoulder and back goes from the top of the shoulder to the hem of the coat for maximum mobility

32" length... a popular length in the Fire Industry

### B2™ Coat Standard Features



Low profile 3" Collar and scooped profile Throat Tab protect without interfering with any SCBA.



Contour-cut Sleeve ergonomically curved so it bends like the human anatomy, giving greater freedom of movement.



Shoulder Pleats give maximum mobility. Set-in Sleeve distributes the weight of the coat evenly over the shoulders.



An extra layer of thermal liner in the shoulders protects from heat buildup in areas of high compression.



3.25" storm flap provides plenty of thermal protection. Closure secures with FR Velcro®.



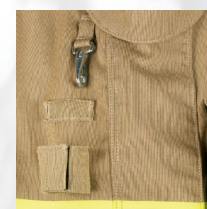
Cuffs feature Black Stedshield reinforcement with a 5" deep sleeve well, great for interfacing with wristlet or gauntlet gloves.



7" Black Kevlar® wristers with thumb hole attached to Black Stedprene sleeve wells.



Radio Pocket with Mic Strap lined with moisture barrier. Antenna Notches left and right.



Universal Flashlight Holder fits any flashlight.



Large 2" x 8" x 8" expansion pocket lined with Kevlar® Twill for additional tools. Hand-warmer pocket slots behind expansion pocket.



Easy access Velcro® Liner Inspection Port in hem of garment for ease of liner inspection.

### OSX B2™ Stock Program

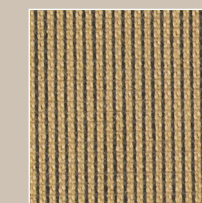
- 6.9 oz. Gold Pioneer Outer Shell
- Defender® M SL2 Camo Print Thermal Liner
- Stedair 3000® Moisture Barrier
- Includes all standard features shown

### Feature List

- 32" Length Coat
- Plastic Delrin® YKK® Zipper/Velcro® Closure
- NYC Style Lime/Yellow 3M™ Scotchlite™ Reflective Material for enhanced visibility - Double Stitched
- Ergonomic Pleated Back/Shoulders
- Easy Grip™ DRD
- Low Profile 3" Collar with Hanger Loop
- Set-In Pleated Ergonomically Curved Sleeves
- 7" Black Kevlar® Thumb hole Wristers
- 5" Deep Black Stedprene Sleeve Wells
- Black Stedshield Coat Cuff Reinforcements – Double Stitched
- 2" x 3.5" x 8" Radio Pocket with Velcro® Antenna Opening on each side of Flap
- Self Mic Strap above Radio Pocket
- Universal Flashlight Holder
- 2" x 8" x 8" Coat Expansion Pockets with Hand-warmer
- Liner Inspection Velcro® Opening
- 3 Snap Tabs at the hem to secure the liner to the outer shell"
- LazerMax™ Trim

### OSX B2™ Standard Materials

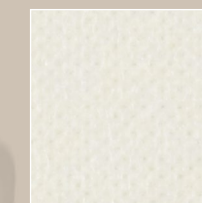
Coat: BP3207G  
Pant: BP3307G



6.6 oz. Gold Pioneer Outer Shell



Defender® M SL2 Camo Print Thermal Liner



Stedair 3000® Moisture Barrier



## B2™ PANTS WITH LAZERMAX™

The challenge? Create a pair of pants designed for maximum protection, comfort and ergonomics while minimizing the weight. The result is B2™. These pants carry over many of the elements of our premier Stealth™ pants, with the addition of a short 3” bib. Round out the feature list with SideKick™ Knee Pads and LazerMax™ trim, and you have pants with no equal!

Compliant to the current 2018 Edition of NFPA 1971 Standard on Protective Ensembles for Structural Firefighting

3M Scotchlite™ Reflective Material



Kevlar. Nomex.



Style OSX BP3307G

### B2™ Pant Standard Features



Low-rise waist with small 3” rear bib for overlap protection.



Multiple Belt Loops keep belt in place. Handy handle grips make donning pants a breeze.



2” Kevlar® Belt System gives maximum wear and tear.



Two front Belt Loops open with Snaps and Velcro® enable use of Class 1 RIT ladder belt.



2” x 10” x 10” expansion pockets lined with Kevlar® Twill for durability.



FR Velcro® closure on square cut fly.



Dynamic Pleats above the knees moves in and out as your legs bend, giving greater mobility and less fatigue.



SideKick™ Knee Pad extends the knee panel to the outside of the leg. SideKick™ reduces abrasion when pushing with the side of the knee.

### Feature List

- Lo-Rise Waist Design with small 3” Rear Bib for Overlap Protection.
- Pant Closure: 2” Wide Black Kevlar® Belt with Belt Loop/Handle Grips, Snap and Velcro® Fly Closure
- 2” x 10” x 10” Pant Expansion Pocket lined with Kevlar® Twill
- Black Stedshield Double Padded Knees with Side Kick Extension Panel
- Black Stedshield Pant Cuff Reinforcements – Double Stitched
- Lime/Yellow 3M™ Scotchlite™ Reflective Material for enhanced visibility – Double Stitched
- Reverse Boot Cut
- Black-Ops™ Multi Adjust Suspenders – No Metal Suspender Buttons!
- LazerMax™ Trim

### OSX® B2 Stock Program

- 6.6 oz. Gold Pioneer Outer Shell
- Defender® M SL2 Camo Print Thermal Liner
- Stedair 3000® Moisture Barrier
- Includes all standard features shown

## B2™ Turnout – A Complete Protection System!



3” short bib

The 32” B2 coat and bib pants combine to make a perfect protection system. The short 3” bib is all that’s needed to ensure complete overlap and protection from the elements.

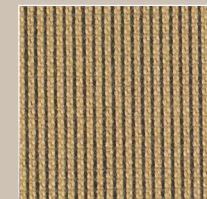


### Black-Ops™ Suspenders!



### OSX B2™ Standard Materials

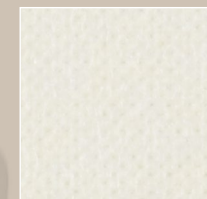
Coat: BP3207G  
Pant: BP3307G



6.6 oz. Gold Pioneer Outer Shell



Defender® M SL2 Camo Print Thermal Liner



Stedair 3000® Moisture Barrier



## B1™ COAT

Want a feature-laden set of gear without breaking the bank? Then the B1™ was tailor-made just for you. It has all of the “every day gotta-have” features that you need to get the job done. Features the competition sells as options, the B1™ has as standard.

All at a price you can afford.

Better yet, OSX B1 is in-stock, on-the-shelf in our Standard Material Configuration.

Style OSX BA3207K shown in Standard OSX B1 Material Configuration



EasyGrip™ DRD for quick response in emergency situations

32" length coat is a standard in the fire industry

Compliant to the current 2018 Edition of NFPA 1971 Standard on Protective Ensembles for Structural Firefighting



## B1™ Coat Standard Features



Low profile 3" Collar and scooped profile Throat Tab protect without interfering with any SCBA.



Contour-cut Sleeve ergonomically curved so it bends like the human anatomy, giving greater freedom of movement.



Set-in Sleeve distributes the weight of the coat evenly over the shoulders.



An extra layer of thermal liner in the shoulders protects from heat buildup in areas of high compression.



3.25" Storm Flap provides plenty of thermal protection. Closure secures with FR Velcro®.



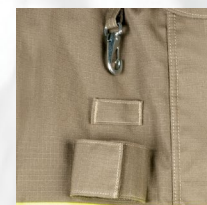
Cuffs feature Black Stedshield reinforcement with a 5" deep Sleeve Well, great for interfacing with wristlet or gauntlet gloves.



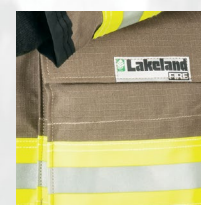
7" Black Kevlar® Wristers with thumb hole attached to Black Stedprene Sleeve Wells.



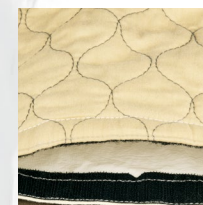
Radio Pocket with Mic Strap lined with moisture barrier. Antenna Notches left and right.



Universal Flashlight Holder fits any flashlight.



Large 2" x 8" x 8" Expansion Pocket lined with Kevlar® Twill for additional tools. Hand-warmer Pocket Slots behind expansion pocket.



Easy access Velcro® Liner Inspection Port in hem of garment for ease of liner inspection.

## Feature List

- 32" Length Coat
- Plastic Delrin® YKK® Zipper/Velcro® Closure
- NYC Style Lime/Yellow 3M™ Scotchlite™ Reflective Material for enhanced visibility - Double Stitched
- Easy Grip™ DRD
- Low Profile 3" Collar with Hanger Loop
- Set-In Pleated Ergonomically Curved Sleeves
- 7" Black Kevlar® Thumbhole Wristers
- 5" Deep Black Stedprene® Sleeve Wells
- Black Stedshield Coat Cuff Reinforcements – Double Stitched
- 2" x 3.5" x 8" Radio Pocket with Velcro® Antenna Opening on each side of Flap
- Self Mic Strap above Radio Pocket
- Universal Flashlight Holder
- 2" x 8" x 8" Coat Expansion Pockets with Handwarmer
- Liner Inspection Velcro® Opening

## OSX® B1 Stock Program

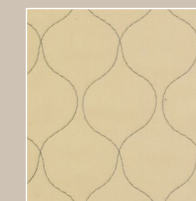
- 6.6 oz. Khaki Pioneer® Outer Shell
- Defender® M Brass NP Thermal Liner
- Stedair 3000® Moisture Barrier
- Includes all standard features shown

## OSX B1™ Standard Materials

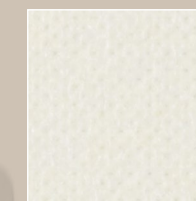
Coat: BA3207G  
Pant: BA3307G



6.6 oz. Khaki Pioneer Outer Shell



Defender® M Brass NP Thermal Liner



Stedair 3000® Moisture Barrier





# B1™ PANTS

Sometimes all you need are the basics, with no bells and whistles. The B1™ provides the basics, plus features pulled from our B2™ line of gear.

The protection you need.

All at a price you can afford.

Better yet, OSX B1 is in-stock, on-the-shelf in our Standard Material Configuration.

### OSX® B1 Stock Program

- 6.9 oz. Khaki Pioneer® Outer Shell
- Defender® M Brass NP Thermal Liner
  - Stedair 3000® Moisture Barrier
- Includes all standard features shown

Style BA3307K shown in Standard OSX B1 Material Configuration



Low-rise 3" Bib

Quick take-up straps for easy adjustments

Double-stitched Stedshield® cuffs

### OSX B1™ Standard Materials

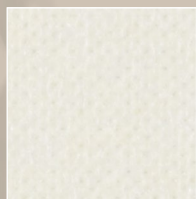
Coat: BA3207G  
Pant: BA3307G



6.6 oz. Khaki Pioneer Outer Shell



Defender® M Brass NP Thermal Liner



Stedair 3000® Moisture Barrier

### B1™ Pant Standard Features



Low-rise Waist with small 3" Rear Bib for overlap protection.



Hook and Dee with FR Velcro® Closure on Square Cut Fly.



Take-up Straps with high temp Delrin® Buckles (no metal!) make adjustments quick and easy.



2" x 10" x 10" Expansion Pockets lined with Kevlar® Twill for durability.



SideKick™ Knee Pad extends the knee panel to the outside of the leg. SideKick™ reduces abrasion when pushing with the side of the knee.



Optional Foam Knee Padding makes sustained crawling more comfortable. Order option PO-FMKP.

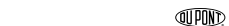
### Black-Ops™ Suspenders!



### Feature List

- Low-Rise Waist Design with small 3" Rear Bib for Overlap Protection
- Side Take-Up Straps with low-profile High Temp (HT) Delrin Sliders for easy adjustment
- Pant Closure: Hook & Dee, Snap with Velcro® Fly Closure
- 2" x 10" x 10" Pant Expansion Pocket lined with Kevlar® Twill
- Black Stedshield Double Padded Knees with Side Kick Extension Panel
- Black Stedshield Pant Cuff Reinforcements – Double Stitched
- Lime/Yellow 3M™ Scotchlite™ Reflective Material for enhanced visibility – Double Stitched
- Reverse Boot Cut
- Black-Ops Multi Adjust Suspenders – No Metal Suspender Buttons!

Compliant to the current 2018 Edition of NFPA 1971 Standard on Protective Ensembles for Structural Firefighting



### B1™ Proximity Gear



The Proximity Series combines the quality custom features of the MTS ordering program, with a highly reflective aluminized layer. When you have to face high temperatures or high risk situations, the Proximity Series provides the ultimate protection.

Coat Style: BAC17  
Pant Style: BAP17



## OSX B10™ COAT

Lakeland's B10™ is a traditional style of turnout gear that fits into firefighting roles at industrial plants, or for use in academies and rental facilities. Strictly designed with economy and price point in mind, the B10™ will protect while complying with necessary OSHA requirements.

Compliant to the current 2018 Edition of NFPA 1971 Standard on Protective Ensembles for Structural Firefighting

**3M** | **Scotchlite™**  
Reflective Material

**DUPONT**  
**Kevlar. Nomex.**



EasyGrip™ DRD for quick response in emergency situations

35" length coat is a traditional cut built on the B1 frame.

Style OSX BA3202Y shown in standard B10 Material Configuration

### OSX B10™ Coat Standard Features



Low profile 3" Collar and scooped profile Throat Tab protect without interfering with any SCBA.



Contour-cut Sleeve ergonomically curved so it bends like the human anatomy, giving greater freedom of movement.



Set-in Sleeve distributes the weight of the coat evenly over the shoulders.



An extra layer of thermal liner in the shoulders protects from heat buildup in areas of high compression.



3.25" Storm Flap provides plenty of thermal protection. Closure secures with FR Velcro®.



Cuffs feature Black Stedshield™ reinforcement with a 5" deep Sleeve Well, great for interfacing with wristlet or gauntlet gloves.



7" Black Kevlar® Wristers with thumb hole attached to Black Stedprene Sleeve Wells.



Large 2" x 10" x 10" expansion pocket lined with Kevlar® twill for additional tools.

### Feature List

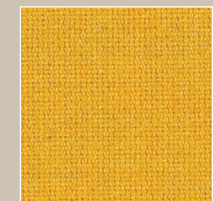
- 32" Length Coat
- Plastic Delrin® YKK® Zipper/Velcro® Closure
- NYC Style Lime/Yellow 3M™ Scotchlite™ Reflective Material for enhanced visibility - Double Stitched
- Easy Grip™ DRD
- Low Profile 3" Collar with Hanger Loop
- Set-In Pleated Ergonomically Curved Sleeves
- 7" Black Kevlar® Thumbhole Wristers
- 5" Deep Black Stedprene® Sleeve Wells
- Black Stedshield Coat Cuff Reinforcements – Double Stitched
- 2" x 3.5" x 8" Radio Pocket with Velcro® Antenna Opening on each side of Flap
- Self Mic Strap above Radio Pocket
- Universal Flashlight Holder
- 2" x 8" x 8" Coat Expansion Pockets with Handwarmer
- Liner Inspection Velcro® Opening

### OSX® B10 Stock Program (as shown)

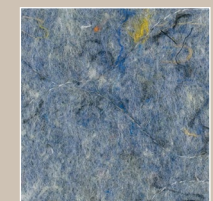
- 7.5 oz. Yellow Nomex® Outer Shell
- Nomex® Quilt Q8 Thermal Liner
- Stedair 3000® Moisture Barrier
- Includes all standard features listed above

### OSX B10™ Standard Materials

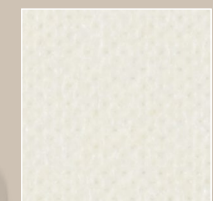
Coat: BA3202Y  
Pant: BA3302Y



7.5 oz. Yellow Nomex® Outer Shell



Nomex® Quilt Q8 Thermal Liner



Stedair 3000® Moisture Barrier

## OSX B10™ PANTS

Lakeland's B10™ pants are built to protect at a cost sure to please. The perfect solution for industrial fire brigades, academies/rental facilities.

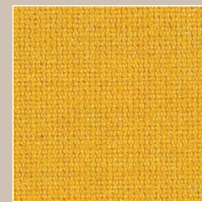
Better yet, **B10™ is in-stock, on-the-shelf gear**, so you don't have long lead times to get it.

### OSX® B10 Stock Program (as shown)

- 7.5 oz. Yellow Nomex® Outer Shell
- Nomex® Quilt Q8 Thermal Liner
- Stedair 3000® Moisture Barrier
- Includes all standard features listed above

### OSX B10™ Standard Materials

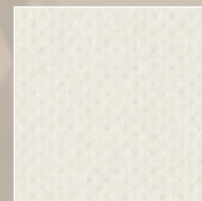
Coat: BA3202Y  
Pant: BA3302Y



7.5 oz. Yellow Nomex® Outer Shell



Nomex® Quilt Q8 Thermal Liner



Stedair 3000® Moisture Barrier



Style **OSX BA3302Y** shown in standard **OSX B10 Material Configuration**

Compliant to the current 2018 Edition of NFPA 1971 Standard on Protective Ensembles for Structural Firefighting



Quick take-up straps for easy adjustments

Double-stitched Stedshield® cuffs

### OSX B10™ Pant Standard Features



Hook and Dee with FR Velcro® Closure on square cut fly.



Take-up Straps with high temp Delrin® Buckles (no metal!) make adjustments quick and easy.



SideKick™ Knee Pad extends the knee panel to the outside of the leg. SideKick™ reduces abrasion when pushing with the side of the knee.



Optional Foam Knee Padding makes sustained crawling more comfortable. Order option PO-FMKP.



**Black-Ops™ Suspenders!**

### Feature List

- Low-Rise Waist Design with small 3" Rear Bib for Overlap Protection
- Side Take-Up Straps with low-profile High Temp (HT) Delrin Sliders for easy adjustment
- Pant Closure: Hook & Dee, Snap with Velcro® Fly Closure
- 2" x 10" x 10" Pant Expansion Pocket lined with Kevlar® Twill
- Black Stedshield Double Padded Knees with Side Kick Extension Panel
- Black Stedshield Pant Cuff Reinforcements – Double Stitched
- Lime/Yellow 3M™ Scotchlite™ Reflective Material for enhanced visibility – Double Stitched
- Reverse Boot Cut
- Black-Ops Multi Adjust Suspenders – No Metal Suspender Buttons!

**OSX B10™ Gear is the perfect solution for industrial fire brigades. B10™ meets OSHA requirements for fire protection at an affordable price point.**



# MATERIALS

## OUTER SHELLS

### Nomex®



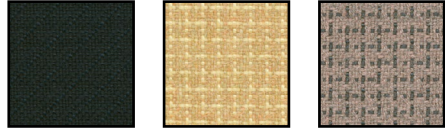
Content: 93% Nomex®/5% Kevlar®/2% Anti-static blend spun yarn  
Material Weight: 7.5oz/yd²  
Plain Weave

### Pioneer™



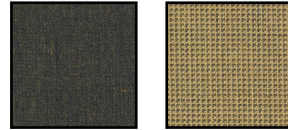
Content: 70/30 Kevlar®/Nomex® spun yarn with Enforce Technology™  
Material Weight: 6.6oz/yd²  
Twill Weave

### Armor™ AP



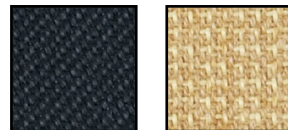
Content:  
**Gold/Black:** 80% Nomex®/Kevlar® spun yarns, 20% 400 denier Kevlar® filament  
**Khaki:** 80% Nomex®/Kevlar®/Teijinconex® spun yarns, 20% 400 denier Kevlar® filament  
Weave: Comfort Twill with Filament Twill Technology  
Material Weight: 6.5oz/yd²

### Agility



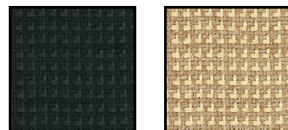
Content: Nomex®/Kevlar®/Polyoxazole with Enforce Technology  
Material Weight: 6.6oz/yd²  
Twill Weave

### Kombat™ Flex



Content: 70% PBI®/Kevlar® blend spun yarn with 30% Kevlar® filament  
Material Weight: 6.9oz/yd²  
Twill Weave

### PBI Max®



Content: 70% PBI®/DuPont Kevlar Spun Yarns  
30% 600 Denier DuPont Kevlar Filament  
Material Weight: 7.0oz/yd²  
Twill Weave

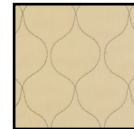
## THERMAL LINERS

### Q8



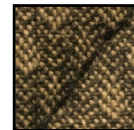
Face Cloth: Meta-aramid, FR modacrylic (spun)  
Batting: Aramid, FR rayon, needle-punch, non-woven, reprocessed batt  
Total Weight: 8.0oz/yd²

### Defender™ M NP Brass



Face Cloth: Lenzing FR® Rayon, para-aramid, Nylon (spun yarn) Plain Weave  
Batting: 1-Layer Aramid Needle Punch  
Total Weight: 7oz/yd²  
Color: Brass

### Prism Pure



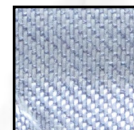
Weave: Channeling Raindrop  
Batting: 4.0 oz. Pure Virgin DuPont™  
Battings: Nomex®/Kevlar® needle punch batting  
Color: Black and Tan

### Defender™ M SL2



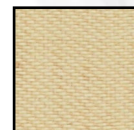
Face Cloth: Lenzing FR®/Para Aramid/Nylon blend spun yarn, plain weave  
Batting: 2 layers of Nomex® spun lace (2 layers of 2.3 oz/yd²)  
Total Weight: 7.8 oz/yd²

### Glide Ice™ 2-Layer



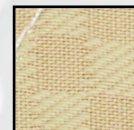
Face Cloth: 3.6 oz/yd² 60% Nomex® filament 40% DuPont Nomex®/Lenzing FR spun yarn  
Batting: 2 layers of Nomex® E89™ spunlace (2.3 oz/yd² and 1.5 oz/yd²)  
Total Weight: 7.4 oz/yd²

### Caldura® SL21



Face Cloth: Kevlar® filament yarn with Lenzing FR®/Kevlar®/Nylon blend spun yarn, twill weave  
Batting: 2 layers of Nomex® non-woven spun lace (2.3 and 1.5 oz/yd²)  
Total Weight: 7.7oz/yd²

### Quantum 3D™ SL21



Face Cloth: Kevlar® filament yarn with Lenzing FR®/Kevlar®/Nylon spun yarn, check weave  
Batting: Nomex®/Kevlar® non-woven spun lace (2.3 oz/yd² with waffle design and 1 layer 1.5 oz/yd²)  
Total Weight: 7.7 oz/yd²

## MOISTURE BARRIERS

### Stedair® 3000



Substrate: Nomex® non-woven spun lace  
Film: Bi-component ePTFE membrane  
Total Weight: 5.2oz/yd²  
Supplier Warranty: 3 Years

### Stedair® 4000



Substrate: Nomex® woven pajama check  
Film: Bi-component ePTFE membrane  
Total Weight: 5.5oz/yd²  
Supplier Warranty: 4 Years

### Stedair® Gold



Substrate: PBI®/Nomex® blend non-woven spun lace  
Film: Bi-component ePTFE membrane  
Total Weight: 5.2oz/yd²  
Supplier Warranty: 4 Years

## MATERIALS MATRIX

OUTER SHELLS	STEDAIR MOISTURE BARRIERS	THERMAL LINERS
SYNERGY (Nomex)	3000	Q-8 NOMEX Quilt
SYNERGY (Nomex)	3000	Defender M Brass NP
SYNERGY (Nomex)	3000	Aralite NP* While supplies last
BRIGADE 750 (Nomex)	3000	Q-8 NOMEX Quilt
BRIGADE 750 (Nomex)	3000	Defender M Brass NP
BRIGADE 750 (Nomex)	3000	Caldura SL2i
ADVANCE	3000	Q-8 NOMEX Quilt
ADVANCE	3000	Defender M Brass NP
ADVANCE	3000	Aralite NP* While supplies last
ADVANCE	3000	OMNI Synergy 2 Layer
ADVANCE	3000	Defender M SL2 Camo
ADVANCE	3000 / 4000	Caldura SL2i
PIONEER	3000	Q-8 NOMEX Quilt
PIONEER	3000	Defender M Brass NP
PIONEER	3000 / 4000	OMNI Synergy 2 Layer
PIONEER	3000 / 4000	Defender M SL2 Camo
PIONEER	3000 / 4000 / Gold	Caldura SL2i
ARMOR AP	3000 / 4000	Prism Pure
ARMOR AP	3000 / 4000	Glide Ice 2-Layer
AGILITY	3000 / 4000	OMNI Synergy 2 Layer
AGILITY	3000 / 4000	Defender M SL2 Camo
AGILITY	3000 / 4000 / Gold	Caldura SL2i
AGILITY	3000 / 4000 / Gold	Quantum 3D SL2i
AGILITY	Gold	Caldura NANO
KOMBAT FLEX	3000	Defender M Brass NP
KOMBAT FLEX	3000 / 4000	OMNI Synergy 2 Layer
KOMBAT FLEX	3000 / 4000	Defender M SL2 Camo
KOMBAT FLEX	3000 / 4000 / Gold	Caldura SL2i
KOMBAT FLEX	3000 / 4000 / Gold	Quantum 3D SL2i
KOMBAT FLEX	Gold	Caldura NANO
PBI MAX	Stedair 3000 / 4000	Glide ICE 2-Layer
1098 ALUM PBI	3000	Q-8 NOMEX Quilt
1098 ALUM PBI	3000	Aralite NP* While supplies last
1098 ALUM PBI	3000	Defender M Brass NP
1098 ALUM PBI	3000	Caldura SL2i
1088 ALUM PARA-ARAMID	3000	Q-8 NOMEX Quilt
1088 ALUM PARA-ARAMID	3000	Defender M Brass NP
1088 ALUM PARA-ARAMID	3000	Caldura SL2i

## WILDLAND GEAR

Get the utmost in visibility, day or night, with LazerMax™™ reflective piping!



### Wildland Fire Coat - Style WLSCT

WLSCTN26 - 6 oz. Yellow Nomex®  
WLSCTI26 - 9 oz. Yellow FR Indura®

- Coat Length: 4" grade front to back; Ex: (XL) 32" Front / 36" Back
- 3M™ Scotchlite™ Reflective Material - 2"
- High-Temp Black Delrin® YKK Zipper with Velcro® Front Closure
- 2-Piece Curved Set-In Pleated Sleeves
- Elasticized cuffs with rugged take-up straps
- Vertical Back Pleats
- 2" x 3.5" x 8" Radio Pocket with mic strap on Left Chest
- 5.5" x 6" Pleated Pocket with flap on Right Chest
- 2" x 8" x 8" Cargo/Handwarmer Base Pockets
- LazerMax™ Reflective Piping on sleeves, shoulders and back



- Velcro® sleeve adjustment
- 2 piece curved set-in sleeves for maximum mobility
- Large cargo/hand warmer pockets
- LazerMax™ trim for superior nighttime visibility

### Wildland Fire Shirt - Style WLSH

WLSHN26 - 6 oz. Yellow Nomex®  
WLSHTS26 - 7 oz. Yellow TecaSafe® Plus

- Banded Collar
- Vented Rear Yoke
- Hidden Front Button Placard
- 3M™ Scotchlite™ Reflective Material - 1" (Heat Transfer) on upper back and sleeves
- Two 5" x 6" Center Pleat Chest Pockets with Flaps
- Elasticized cuffs with rugged take-up straps



- Hidden front button placard
- Pleated chest pockets with flaps
- Velcro® sleeve adjustment

### Wildland Fire Pants - Style WLSPT

WLSPTN26 - 6 oz. Yellow Nomex®  
WLSPTI26 - 9 oz. Yellow FR Indura®

- 3M™ Scotchlite™ Reflective Material - 2"
- High-Temp Black Delrin® YKK Zipper Fly Closure
- 2" Elasticized Rear Waistband
- Five 3.5" Belt Loops
- Side Slash Pocket
- 2" x 10" x 10" Expansion Pockets
- 6" x 6.5" Rear Pleated Pockets with Flaps
- Triple Pleated Knees
- Elasticized cuffs with rugged take-up straps
- LazerMax™ Trim on outside leg seams



### Our Black-Ops Suspender System is now available on all Wildland Pants!

Order our optional Black-Ops™ Suspender System, or the 2" Kevlar Belt.  
Order option 135R (regular length) or 135S (short length)

### Wildland Fire Pants - Style WLPT

WLPTN19 - 6 oz. Spruce Green Nomex®  
WLPTI19 - 9 oz. Spruce Green FR Indura®

- High-Temp Black Delrin® YKK Zipper Fly Closure
- 2" Elasticized Rear Waistband
- Five 3.5" Belt Loops
- Side Slash Pocket
- 2" x 10" x 10" Expansion Pockets
- 6" x 6.5" Rear Pleated Pockets with Flaps
- Triple Pleated Knees
- Elasticized cuffs with rugged take-up straps
- 3M™ Scotchlite™ Reflective Material
- LazerMax™ Trim on outside leg seams

### Wildland Fire Coverall - Style WLSCV

WLSCVN26 - 6 oz. Yellow Nomex®  
WLSCVI26 - 9 oz. Yellow FR Indura®

- 3M™ Scotchlite™ Reflective Material - 2"
- High-Temp Black Delrin® YKK Zipper Front Closure
- Stand Up Overlapping Collar
- 2-Piece Set-In Sleeves
- Elasticized cuffs with rugged take-up straps
- Vertical Back Pleats
- 2" x 3.5" x 8" Radio Pocket on Left Chest
- Mic Strap above Radio Pocket
- 5" x 5" Spade Pocket with flap on Right Chest
- Side Slash Pocket
- Pass thru pockets with Snap closure
- 2" x 10" x 10" Expansion Pockets
- Two 6.5" x 8" Rear Internal Seat Pockets with Flaps
- Self-Material Reinforced Knees
- 18" High-Temp Black Delrin® YKK Leg Zippers
- LazerMax™ Trim on outside Arm and Body/Leg seams



## DUAL CERTIFIED AND EXTRICATION GEAR

### Ergonomic gear that meets NFPA 1977/1951 Wildland/Urban Search and Rescue (Utility)

#### DCCVD Coverall:

- Outershell: 6.5oz Defender M Gold Woven Rip-Stop (FR Rayon – 65%, P-Aramid – 25%, Nylon – 10%)
- Stand Up Overlapping Collar
- 2-Piece Set-In Sleeves
- Elasticized Cuffs with Beefy Take-Up Straps
- Vertical Back Pleats
- 2x3.5x8 Radio Pocket on Left Chest
- Mic Strap above Radio Pocket
- 5x5 Spade Pocket with flap on Right Chest
- Elasticized Waist with adjustable Take-Up Straps
- Side Slash Pocket
- Pass thru pockets with Snap closure
- 2x10x10 Expansion Pockets
- (2) 6.5x8 Rear Internal Seat Pockets with Flaps
- Black Ara-Shield Knee Reinforcements
- 18" High-Temp Black Delrin YKK Leg Zippers
- 3M™ Scotchlite™ Segmented Reflective Material for enhanced visibility
- LazerMax™ Trim on outside Arm and Body/Leg seams



Style DCCVD



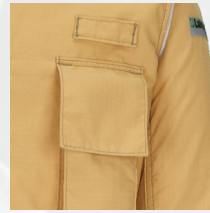
Stand-up Overlapping Collar provides neck protection when needed.



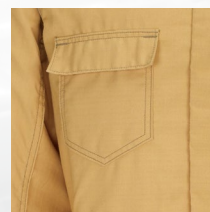
2-piece Set-in Sleeves allow maximum mobility.



Take-up Straps at cuff and waist give maximum adjustments.



Radio Pocket with Mic Strap fits a variety of radio manufacturers.



Pockets galore! Spade, Side Slash, Expansion, and Seat pockets.



LazerMax™ Reflective Piping for maximum night-time visibility.

#### DCCTD Coat:

- Outershell: 6.5oz Defender M Gold Woven Rip-Stop (FR Rayon – 65%, P-Aramid – 25%, Nylon – 10%)
- Coat Length: 4" grade front to back; Ex: (XL) 32" Front / 36" Back
- Stand-up Overlapping Collar
- 2-Piece Curved Set-In Pleated Sleeves
- Elasticized Cuffs with Beefy Take-Up Straps
- Vertical Back Pleats
- 2" x 3.5" x 8" Radio Pocket on Left Chest
- Mic Strap above Radio Pocket
- 5.5" x 6" Pleated Pocket with flap on Right Chest
- 2" x 8" x 8" Cargo/Hand-warmer Base Pockets
- 3M™ Scotchlite™ Segmented Reflective Material for enhanced visibility
- LazerMax™ Reflective Piping on sleeves, shoulders and back



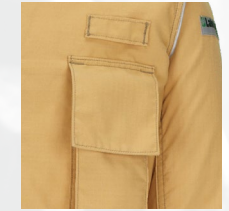
Style DCCTD



Stand-up Overlapping Collar provides neck protection when needed.



2-piece Set-in Sleeves allow maximum mobility.



Radio Pocket with Mic Strap fits a variety of radio manufacturers.



LazerMax™ Reflective Piping for maximum night-time visibility.

NEW

#### DCPTD Pants

##### Our Dual Cert Pants just got better!

We've upgraded the pants to include the snap-tabs and segregated MOLLE style loops! This feature allows you to install as an option our Black-Ops Suspenders! Or, order our 2" Kevlar® belt for maximum wear and tear!

- Outershell: 6.5oz Defender M Gold Woven Rip-Stop (FR Rayon – 65%, P-Aramid – 25%, Nylon – 10%)
- 2" Elasticized Rear Waistband
- Five 3.5" Belt Loops
- Side Slash Pocket
- 2" x 10" x 10" Expansion Pockets
- 6" x 6.5" Rear Pleated Pockets with Flaps
- Triple Pleated Knees
- Black Ara-Shield Reinforced Knees
- 18" High-Temp Black Delrin YKK Leg Zippers
- Beefy Take-Up Strap at Cuffs
- 3M™ Scotchlite™ Segmented Reflective Material for enhanced visibility
- LazerMax™ Trim on outside leg seams



Style DCPTD

NEW



New! Order our optional Black-Ops™ Suspender System, or the 2" Kevlar Belt. Or get both! **Order option 135R (regular length) or 135S (short length)**



2" Elasticized Rear Waistband with five 3.5" belt loops.



Large 2" x 10" x 10" Expansion Pockets carry plenty of tools and accessories.



Triple Pleated Knees allow maximum movement and bending.



LazerMax™ Reflective Piping for maximum night-time visibility.



## 911 SERIES EXTRICATION GEAR



Style EXCT



Style EXPT

### Extrication Coat Feature List

- Stand-Up Collar with overlapping Storm Flap
- Zipper and Velcro® Front Closure
- Pleated Shoulders for increased mobility and reach
- Pleated Ergonomically Curved Set-In Sleeves
- Self-Reinforced Elbows
- Elasticized Cuffs with Rugged Take-Up Straps
- Pocket on left Sleeve with Pencil Slot
- Radio Pocket with Mic Strap on Left Chest
- Stethoscope pocket on Right Chest with Utility Loop at bottom
- 2" x 8" x 8" Expansion Pockets with 3M Silver Reflective Pull-Tabs
- Lime/Yellow Triple Trim
- LazerMax™ Trim

Material: 7 oz. FR Cotton

Colours: Navy, Tan, Red

Extrication Coats and Pants are Special Order



### Extrication Pant Feature List

- Zipper Fly with Snap
- 2" Elasticized Rear Waistband
- Belt Loops
- Side Entry Slash Pockets
- Rear Hip Patch Pockets with Velcro® Flaps
- 2" x 7" x 9" Expansion pockets on legs
- Scissor pocket with strap on Right Side Pocket
- Triple Pleated Knees
- Padded Polymer Back Coated Para-Aramid Knee Reinforcements
- 18" HT Delrin® Leg Zippers
- Rugged Take-Up Strap at Cuffs
- Lime/Yellow Triple Trim
- LazerMax™ Trim

Material: 7 oz. FR Cotton

Colours: Navy, Tan, Red

Extrication Coats and Pants are Special Order



### Extrication Coveralls Feature List

- Stand-Up Overlapping Collar
- Zipper and Velcro® Front Closure
- Pleated Shoulders for increased mobility and reach
- Ergonomically Curved Set-In Sleeves
- Self-Reinforced Elbows
- Elasticized Cuffs with Rugged Take-Up Straps
- Pocket on left Sleeve with Pencil Slot
- Radio Pocket with Mic Strap on Left Chest
- Stethoscope pocket on Right Chest with Utility Loop at bottom
- Elasticized Rear Waist Band with Take-Up Straps
- Rear Hip Pockets with Velcro® Flaps
- 2" x 10" x 10" Expansion pockets on legs
- Scissor pocket with strap on Right Side Pocket
- Padded Polymer Back Coated Para-Aramid Knee Reinforcements
- 18" HT Delrin® Leg Zippers
- Rugged Take-Up Strap at Cuffs
- Lime/Yellow Triple Trim
- LazerMax™ Trim

Material: 7 oz. FR Cotton

Colours: Red, Navy (Tan available - Special Order)



Style EXCV

911 Series...  
Maximum  
Performance!  
Maximum  
Protection!



## OPTIONS AND ACCESSORIES TRIM PATTERNS



3" NFPA Basic



3" Project Fires

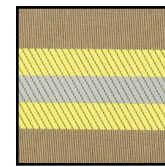


3" Hi-Visibility

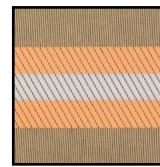


3" NYC

## TRIM MATERIALS



3M Comfort Segmented Trim  
Lime/Yellow:  
CO-SEGLS3,  
PO-SEGLS3



3M Comfort Segmented Trim  
Red/Orange:  
CO-SEGRS3,  
PO-SEGRS3



3M Red/Orange Triple  
Trim



3M Lime/Yellow Triple  
Trim

## FLAGS



Embroidered Canadian Flag  
EMB02-FLG

## FOAM PADDING



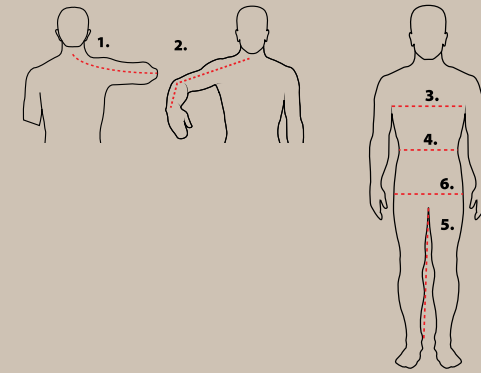
FR Foam Knee Padding  
Stealth: PO-FMKPST  
A10, B1, B2: PO-FMKP

## RIT BELT



PO-RITRB

## SIZING - GET THE RIGHT FIT!



### Measuring Instructions

- Sleeve:** Begin tape measure at nape of neck...
- Follow** the outside contour of arm around elbow to 1" past wrist bone or fatty part of palm.
- Chest:** Have Firefighter inhale and hold breath while you measure around the fullest part of the chest, keeping tape under arms and around shoulder blades.
- Waist:** Measure around waist, over shirt and slacks at height you normally wear your slacks. Keep one finger between tape and body.
- Inseam:** Wearing normal station wear, measure from crotch inner seam to ankle bone or desired length.
- Hips (Women only):** Measure around fullest part of hips.

**Note for Sleeve Measurement:** For unusually long or short arms measure sleeve by holding arm out and forward as shown below; however, sleeve lengths are graded to chest size so measuring is usually not necessary.

### Important Instructions for Pant Waist Measurements

#### When using a tape to measure pants

- If Measuring Close to the Body:** Pant waist should be measured as close to the body as possible. Lakeland turnout pants are constructed with a 4" built-in easement at waist, so wearing a lighter weight garment, such as shorts, at the time of measurement will determine a more accurate measurement. Example: If tape measurement close to body is 46", a size 46" waist should be ordered.
- If Measuring Over Clothing:** Deduct 4" from final measurement. Example: If tape measurement over clothing is 40", a size 36" waist turnout pant should be ordered.
- When using sizing samples:** The size of each sizing sample pant is clearly displayed on the outside of the pants. Find a pant that fits and order the size indicated on the pant.

Call for special/custom sizing

## TURNOUT GEAR

Turnout Coat												
Chest	34	36	38	40	42	44	46	48	50	52	54	56
Sleeve	32.5	33.25	33.75	34.5	35	35.75	36.5	37.25	38	38.75	39.5	40.25

Special sleeve lengths are available in 1" increments.  
Coat chest available in 2" increments.

Turnout Pant												
Waist	30	32	34	36	38	40	42	44	46	48	50	52

Pant waist and inseams available in 2" increments.

## WILDLAND AND DUAL CERTIFIED GEAR

Coat & Shirt									
	S	M	L	XL	2XL	3XL	4XL	5XL	6XL
Chest	36-38	40-42	44-46	48-50	52-54	56-58	60-62	64-66	68-70
Sleeve	34	35	36	37	38	39	40	41	42

Pant									
	S	M	L	XL	2XL	3XL	4XL	5XL	6XL
Waist	26-28	30-32	34-36	38-40	42-44	46-48	50-52	54-56	58-60

Inseams available in 2" increments.

Coveralls																		
	S		M		L		XL		2XL		3XL		4XL		5XL		6XL	
Chest	36-38		40-42		44-46		48-50		52-54		56-58		60-62		64-66		68-70	
Sleeve/ Inseam	Sleeve	Inseam	Sleeve	Inseam	Sleeve	Inseam	Sleeve	Inseam	Sleeve	Inseam	Sleeve	Inseam	Sleeve	Inseam	Sleeve	Inseam	Sleeve	Inseam
	X-Short	30	26	31	26	32	26	33	26	34	26	35	26	36	26	37	26	38
Short	32	28	33	28	34	28	35	28	36	28	37	28	38	28	39	28	40	28
Regular	34	30	35	30	36	30	37	30	38	30	39	30	40	30	41	30	42	30
Tall	36	32	37	32	38	32	39	32	40	32	41	32	42	32	43	32	44	32
X-Tall	38	34	39	34	40	34	41	34	42	34	43	34	44	34	45	34	46	34

X-Short Coveralls: Subtract 4" from standard sleeve and inseam lengths, and 1" from torso

Short Coveralls: Subtract 2" from standard sleeve and inseam lengths, and 1" from torso

Tall Coveralls: Add 2" to standard sleeve and inseam lengths, and 1" to torso

X-Tall Coveralls: Add 4" to standard sleeve and inseam lengths, and 1" to torso

If chest measurement falls between sizes, go up to next larger size





## LAKELAND CHEMICAL/HAZMAT PPE

Lakeland Industries is a manufacturer of chemical protective clothing for First Responders and HazMat Teams around the globe. For protection from bloodborne pathogens and viral contamination, all the way up to vapor tight Level A suits, Lakeland has a comprehensive product offering to address your protective clothing requirements. Contact your Lakeland representative for additional information on these products and schedule a more detailed discussion on the benefits of choosing Lakeland.



### Innovative Technology In Selecting Chemical Protection

Lakeland's advanced chemical protective fabrics:

- ChemMax® 3
- ChemMax® 4 Plus
- Interceptor® Plus

Are Supported By



Calculate safe use times and access information on 4,000+ chemicals with PermaSURE®

